

**DETERMINATION METHOD OF STEREOEFFECT DISTORTIONS AT RECEIVING IN THE NETWORK OF VHF-FM SYNCHRONOUS SOUND BROADCASTING**

A.A.VYKHODETS

*Annotation. It is described a new method of determination of transient distortions between stereophonic channels in the field measurements and the results of application of this method are given/*

87,5...108

[1,2] [3].

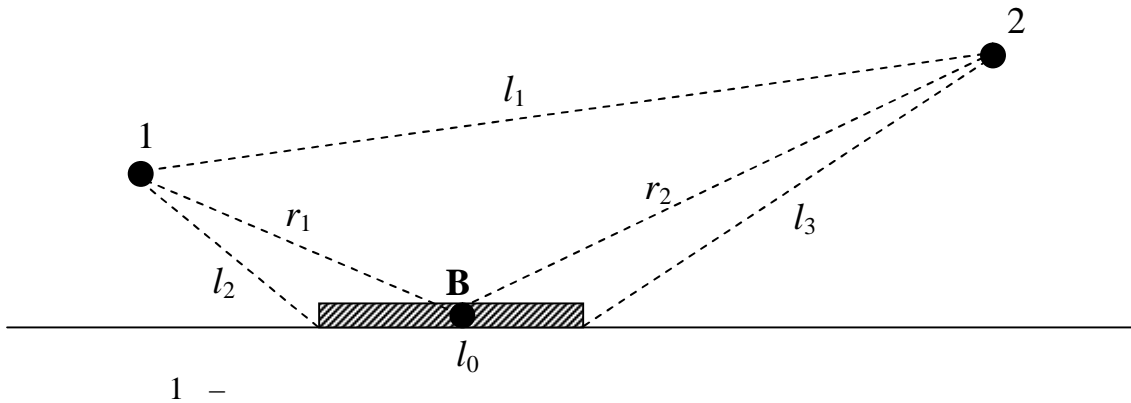
87,5-108

[4].

$f = 107,7$   
 $0,5$   
 $1$

$1$   $2,$   
 $4$

$L$   $R$   
 $l_1 = 50$   
 $2 - 1$   
 $9$



$l_1 = 50$  ,  $l_2 = 12$  ,  $l_3 = 31$  ,  $l_0 = 15$  ,  $r_1$   $r_2$  -

1 2:  
1 2

$l_2 = 12$  1 31  
1 2 -  
[5].  
1 2

$l_0 = 15$  ,  
2 ( . 1).  
:  $\Delta = 20 \lg(E_1/E_2) = 0$ .  
 $L$   $R$   
 $F = 1000$  .  
Sangan HDR-1  
60 / .

15

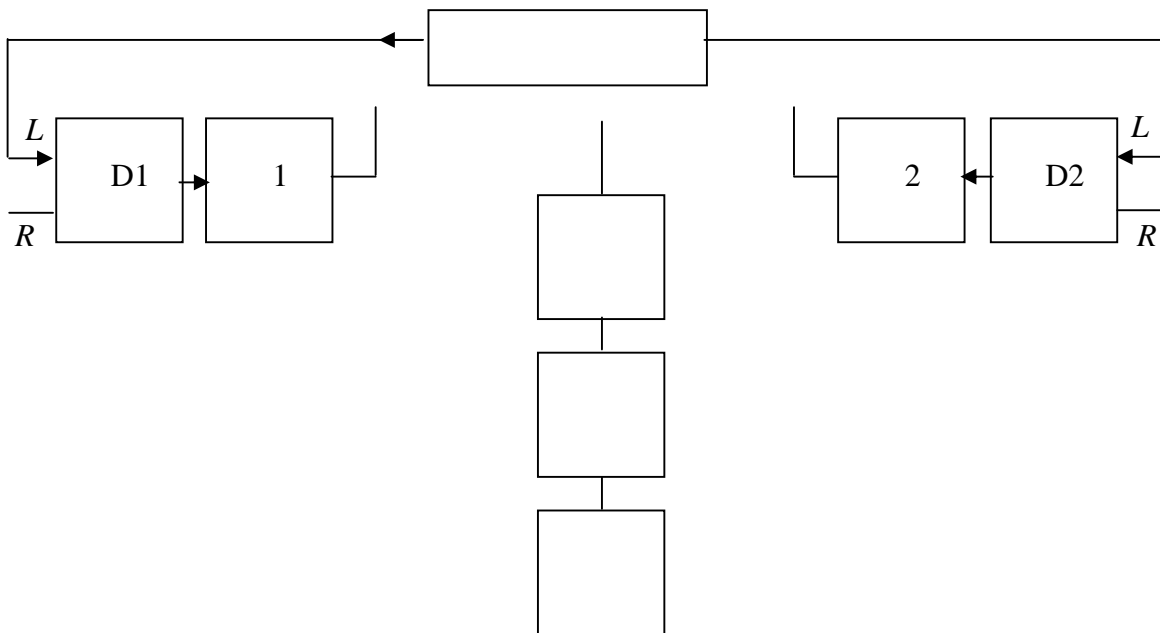
Samsung RG&R

«Sound Blaster» «Creative» ( .2).  
1000 ,

«Cool Edit  
 $L$

Pro2.0».

$R$



2 -

:

D1, D2 - ; - ; - ; -

1000 ,

«Cool Edit  
L

Pro2.0».

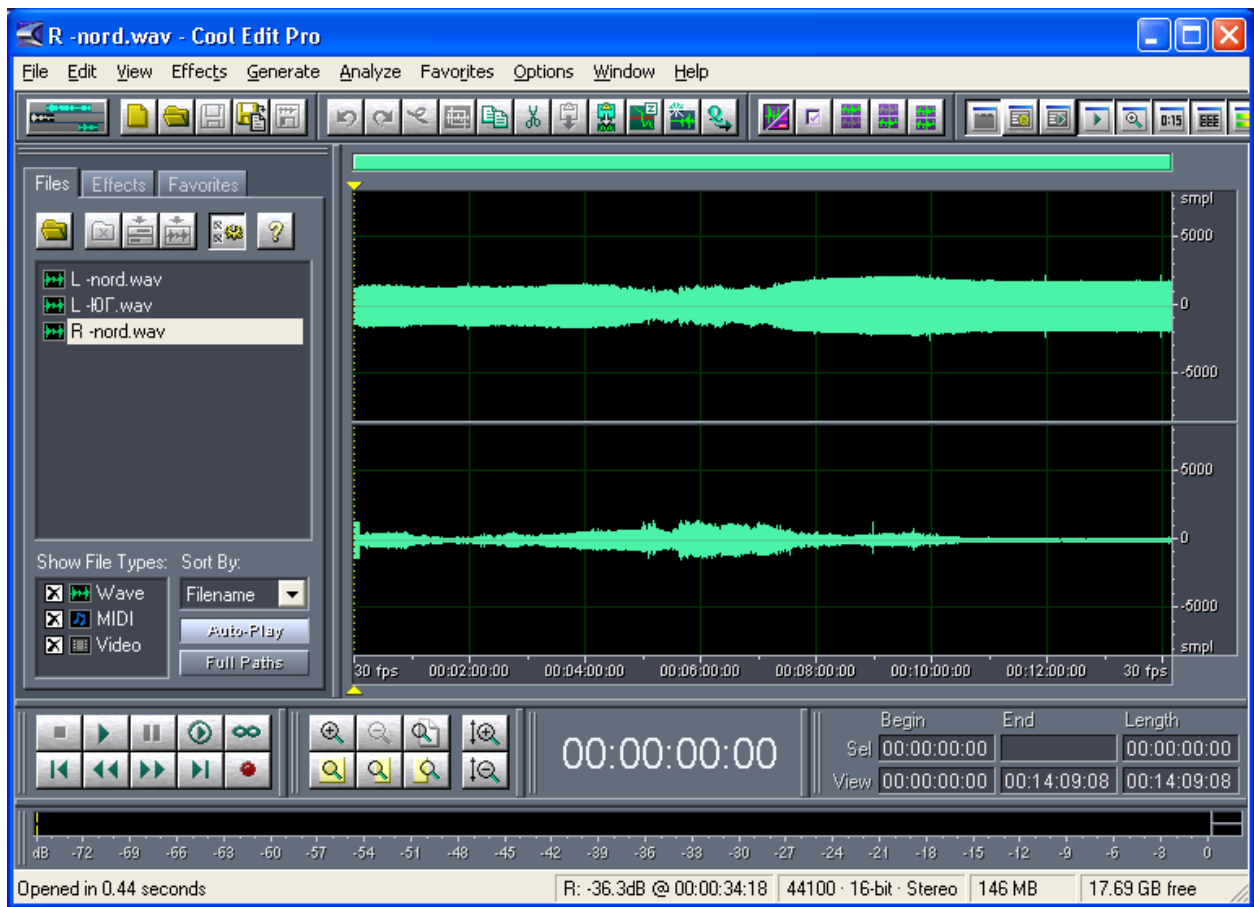
R  
. 3 4  
15 ,

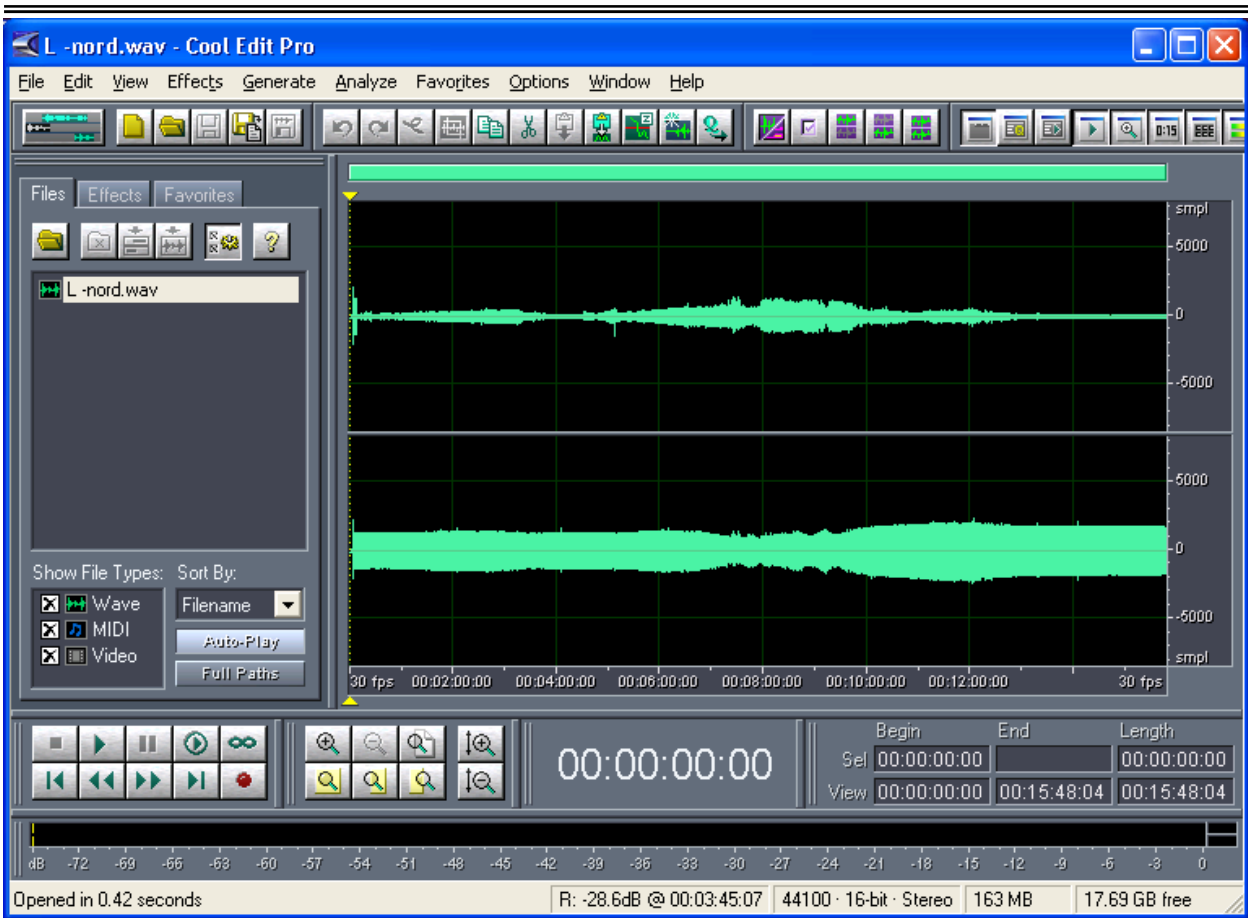
1000

1 2  
4).

L ( .3)

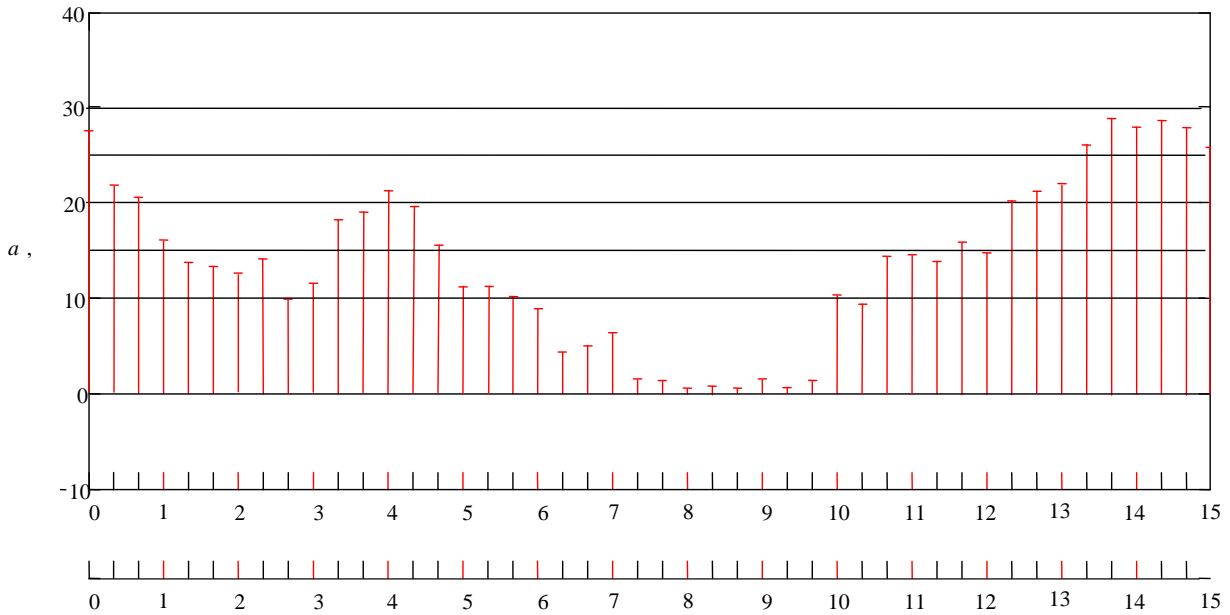
R ( .



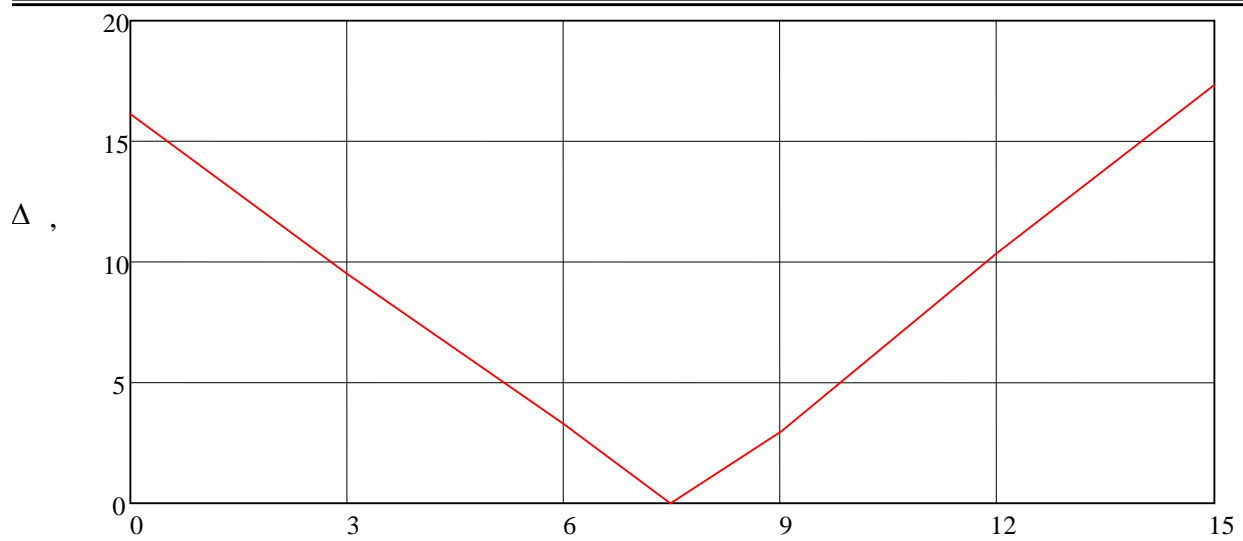


$( )^3 - R( ) ( ) R( ) L$   
 $L( .3, ) - L R$   
 $= N_L - N_R, ,$   
 $= N_R - N_L, ,$   
 $N_L N_R -$   
 $.4 L R.$   
 $.5,$   
 $20 .$   
 $330 .$   
 $- [2] ,$   
 $4 5-$   
 $[6] ,$   
 $\geq 20. 4 .5$

[2]. 4-  
 .4 ,  
 $\geq 20$  , 0...0,67 ( )  
 12,33...15 ( )  
 11,67 .  
 $\geq 20$  ,  
 [2].  
 .5  
 $\Delta = 20 \lg(E_1/E_2)$  ,  
 [4]..  
 (0,67 ) =  $\Delta \approx 15$  (12,33 )  $\approx 11$  .



4 -  
 $L R$  ( , )  
 , 15  
 1 2



109,6      91,8      74,43      57      35,9       $r,$  16,17

5 -

$\Delta$

15

$\tau,$

1 2,

$$\tau = \left| \frac{r_1 - r_2}{c} \right|$$

1 2, 2

( - )

$(r_1 = r_2)$  ,  $\Delta = 0,$

1.

( )

2.

1. ITU-R Document 10B/24-E France. Synchronous FM Network
2. ITU-R BS-412-7 Planning standards for sound broadcasting at VHF.
3. Harris Corporation Interplex Products.
4. . . . . - : , 2005. - 246 .
5. “ ” 27.03.09 4411/1
6. . . . . - . : , 1974. - 264 .